



2008

Product Updates

New 3" Swing-Check ESV for Bulk Plants 6024

**Redesigned G8475 ASME Multivalves®
with Pressure Gauge Port**

New A3209PAF Actuator

Redesigned Internal Valve A3217FA & A3217DFA

New 8475-50L Extended Fill Adapter



New 3" Swing-Check ESV for Bulk Plants 6024

Application

Designed for installation in liquid transfer lines at LP-Gas or Anhydrous Ammonia bulk plants to provide for quick shut-off of liquid or vapor flow in the event of an accidental pull-away, line break, or hose rupture.

Features

- Fusible Element is located in the thermal fuse assembly which acts at the latch open and close trigger. When exposed to fire, the element melts at 212 degrees F. allowing the shaft to return to the closed position.
- Valve can be opened by use of operating lever, if a pneumatic actuator is used it will open with the actuator.
- Valve can be closed by remote cable or pneumatic actuator.
- Valve can be closed by simply pushing the operating lever down, it is not necessary to trip the close trigger.
- Seat is metal protected to minimize leakage in case direct fire impingement.
- Straight through design allows for a liquid flow of 400 GPM (LPG) with only a 1 psig drop.
- Quick closing regardless if the pump is running or not.

Sturdy Rugged Construction

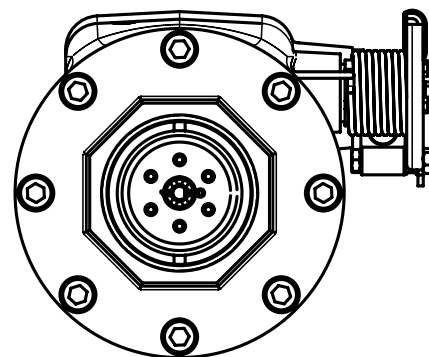
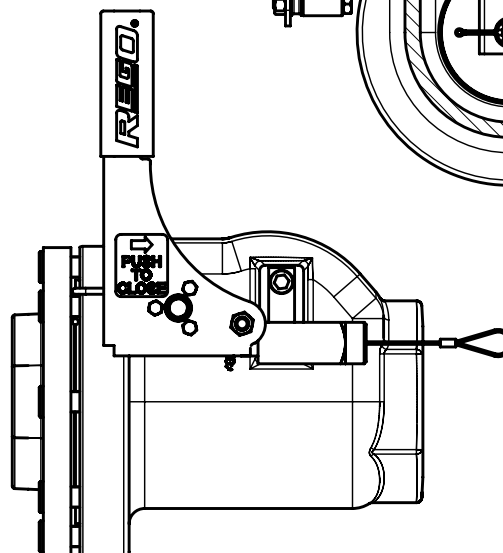
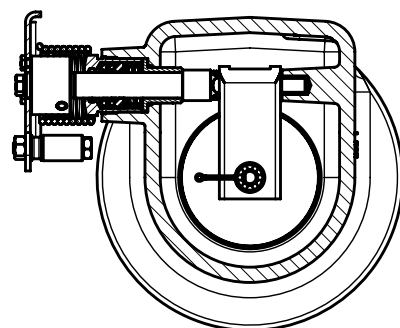
- Will withstand hydraulic shock of sudden closings, piping strains, and temperature variations.
- Valve has only two moving parts, stem and close/thermal trigger.
- 6024 is UL listed for use in LP-Gas as an emergency and operating shut-off valve.
- Stem seals are spring loaded for leak free performance at low temperatures/pressures.

Materials

Body Ductile Iron Cad Plated
 Stem Stainless Steel
 Seat Stainless Steel
 Seat Disc (6024) High Temperature Viton
 Seat Disc (AA6024) Synthetic Rubber
 Springs Stainless Steel
 Gaskets Teflon



6024



Ordering Information

Part Number	For Use With:	Inlet and Outlet Connections	Liquid Flow Capacity at 10 PSIG Drop (GPM)	Accessories	
				Remote Pneumatic Close	Remote Pneumatic Open/Close
6024	LP-Gas	3" F-NPT	1325 (LP-Gas)	6016-60D	6016-60C
AA6024	NH ₃	3" F-NPT	1173 (NH ₃)		

Redesigned G8475 ASME Multivalves® with Pressure Gauge Port

Application

These Multivalves® are designed for use in single opening ASME containers equipped with a 2 1/2" M. NPT riser. They can be used with underground ASME containers up to 639 sq. ft. surface area, and above ground ASME containers up to 192 sq. ft. surface area. A separate opening is required for liquid withdrawal. The MultiBonnet® is standard on this valve.

Features

- The most complete Multivalve® assembly in the LP-Gas industry.
- Combines double back check filler valve, vapor equalizing valve with excess flow, pressure relief valve with protective cap and chain, service line shut-off valve, fixed liquid level gauge, "junior" size float gauge flange opening and plugged pressure gauge opening in one unit.
- **Designed for installation of a 1/8" FNPT pressure gauge or pressure gauge connection. The pressure test port will communicate to the downstream side of the service valve.**
- Double back check filler valve has filling capacities matched to the high capacity pumps and meters on modern delivery trucks.
- Vapor equalizing valve with excess flow has increased capacity matched to the filler valve.
- Internal threads accommodate 2 1/2" M. NPT riser pipe connection and a 3/4" F. NPT connection for a customer furnished liquid baffle tube.
- MultiBonnet® allows quick and easy repair of bonnet.

Materials

Body Forged Brass
 Handwheel Aluminum Die Cast
 Valve Stems Brass
 O-Rings Resilient Rubber
 Seat Disc (shut-off valve) Nylon
 Seat Disc (other) Resilient Rubber
 Relief Spring Stainless Steel

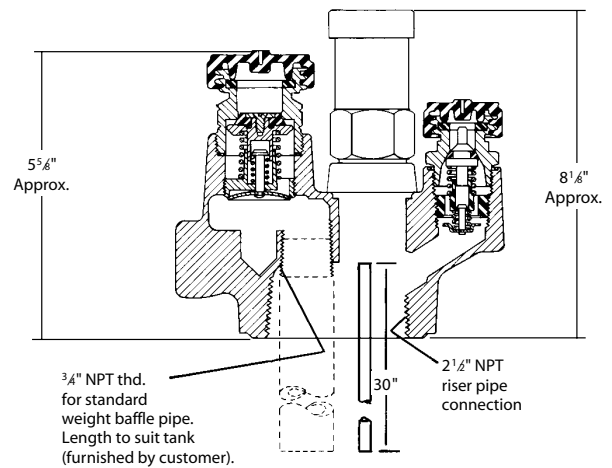


Ordering Information



G8475R

With the service valve closed the pressure port will be isolated from the container. This will allow a high pressure leak test to be conducted without disconnecting the pigtail from the service valve.



Part Number	Approximate Filling Rate Liquid Flow, GPM			
	Pressure Drop Across Valve			
	10 PSIG	25 PSIG	50 PSIG	100 PSIG
G8475RV	42	72	98	125
G8475RW				

Part Number	Container Connection	Service Connection	Filling Connection	Vapor Equalizing Connection		Float Gauge Flange Opening	Fixed Liquid Level Vent Valve Style	Dip Tube Length	Pressure Relief Valve			For use in containers w/ surface are up to:	
				Size	UL Listed Closing Flow				Setting	Part Number	Flow Capacity		
											UL		ASME
G8475RV	2 1/2" F. NPT	F. POL (CGA 510)	1 3/4" M. ACME	1 1/4" M. ACME	4200 CFH @ 100 PSIG	Fits "JUNIOR" size	Knurled	30"	250 PSIG	M3131G	2020 SCFM, air	1939 SCFM, air	83 sq. ft. above ground
G8475RW										MV3132G	3995 SCFM, air	n/a	192 sq. ft. above ground
													639 sq. ft. under ground

*Dip tube not installed, may be cut by customer to desired length.

New A3209PAF Actuator

Application

This actuator permits the A3209 internal valve to be opened and closed remotely. It can be used with the air brake system on a bobtail, or can be used at a dispenser or bulk plant.

Features

- All necessary hardware for installing the actuator is included
- A 212°F thermal element is included to meet requirements of NFPA 58 or 49CFR.

Materials

Mounting Bracket Stainless Steel
Connecting Rod Stainless Steel
Return Spring Stainless Steel



A3209PAF



Ordering Information

Part Number	Minimum Operating Pressure	Maximum Operating Pressure
A3209PAF	40 PSIG	125 PSIG

Redesigned Internal Valve A3217FA & A3217DFA

Application

Designed primarily for LP-Gas and anhydrous ammonia filling and/or withdrawal on MC331 bobtail delivery trucks, transports and stationary storage tanks with flanged pumps or piping. Installation is quick and easy, and the valve may be operated manually by cable or pneumatically.

Lever available on right or left side to allow for installation without the use of an extra pulley.



Features

Provides More Efficient Operation

- Flow passages designed to allow substantially higher flow without cavitation or loss of efficiency--saving time and money.
- Simple operating lever facilitates easy adaptation of all cable controls.
- Lever available on right or left side to allow for installation without the use of an extra pulley.
- Nylon bearing supported operating shaft provides smooth, easy operation.

Less Frequent-Easier Maintenance

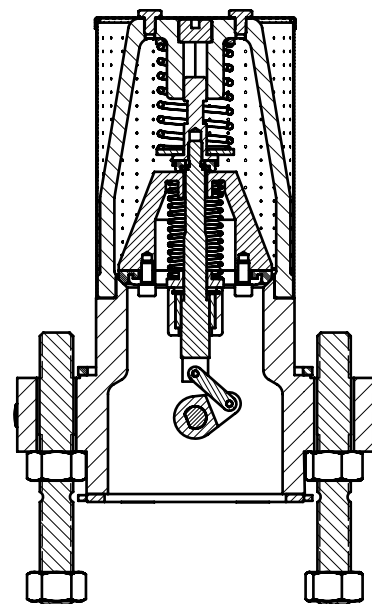
- Stainless steel screws resist rusting and are easily removed during valve disassembly.
- Heavy duty rod wiper helps minimize dirt and foreign material from entering operating shaft and hampering operation.

Durable Construction

- Cadmium plating helps resist corrosion during storage and use.
- All ferrous materials with a temperature range of -40° F. to +130° F. and a pressure rating of 400 psi.
- Sturdy retaining ring secures operating cam to provide for more durable, slack-free operation.
- Built-in excess flow valve.
- Specify RegO® Internal Valves on your next new tank or when your truck is rebuilt.



A3217FA



Ordering Information

Part Number		Operating Lever Position	Inlet Connection	Outlet Connection	Closing Flow GPM		Accessories	
					LP-Gas	NH ₃	Pneumatic Actuator	
						Right Operation	Left Operation	
A3217FAR160	A3217FAL160	Left or Right	3" 300# ANSI RF Modified Flange**	3" 300# ANSI RF Flange	160	145	A3217FRPA	A3217FLPA
A3217FAR210	A3217FAL210				210	190		
A3217FAR260	A3217FAL260				260	236		
A3217FAR410	A3217FAL410				410	372		

New 8475-50L Extended Fill Adapter

8475-50L Repair Kit for 8475 & 8477 Multivalves with 1 3/4- 6 ACME Filler Valve

WARNING: Installation, disassembly, repair and maintenance must be performed only by qualified personnel.

MAINTENANCE ON THE UPPER BODY OF THE ABOVE VALVES SHOULD BE PERFORMED AFTER ALL GAS IS EVACUATED FROM THE CONTAINER AND THE VALVE REMOVED. EMERGENCY SERVICE MAY BE CARRIED OUT WITH THE VALVE INSTALLED BUT ONLY UNDER THE SAME CONDITIONS REQUIRED FOR RELEASING LP-GAS (see caution).

Installation, usage and maintenance of this product must be in compliance with all Engineered Controls International, Inc. instructions as well as requirements and provisions of NFPA #54, NFPA #58, DOT, ANSI, all applicable federal, state, provincial and local standards, codes, regulations and laws. Inspection and maintenance on a periodic basis is essential. Be sure all instructions are read and understood before installation, operation and maintenance. These instructions must be passed along to the end user of the product.

CAUTION: Contact or inhalation of liquid propane, ammonia and their vapors can cause serious injury or death! NH3 and LP-Gas must be released outdoors in air currents that will insure dispersion to prevent exposure to people and livestock. LP-Gas must be kept far enough from any open flame or other source of ignition to prevent fire or explosion! LP-Gas is heavier than air and will not disperse or evaporate rapidly if released in still air.

Disassembly and Repair Procedure

CAUTION: READ THROUGH ALL OF THESE INSTRUCTIONS, INCLUDING THE NOTICE AND WARNINGS ON THE BACK OF THIS SHEET, BEFORE BEGINNING ANY DISASSEMBLY OR REPAIR.

NOTE: Repairs must be performed in a clean area. Hands, clothing, tools and work area must be completely free of oil, grease and foreign matter to prevent contamination of component parts and valves.

A. Disassembly - See Figure 1

1. Remove cap and save for reassembly.

If valve is repaired with gas in the container (Emergency Service), go to step A2. If the valve is repaired with all gas evacuated from the container, proceed to step

2. Depress upper check to assure assembly is functioning properly. If check assembly is not functioning properly, then additional repairs maybe necessary after gas is removed from container.
3. Use a 7/8" allen wrench or a suitable wrench to loosen filler valve body by turning counterclockwise. Remove filler valve body and seal gasket and discard.
4. Remove old gasket from the main body and discard.

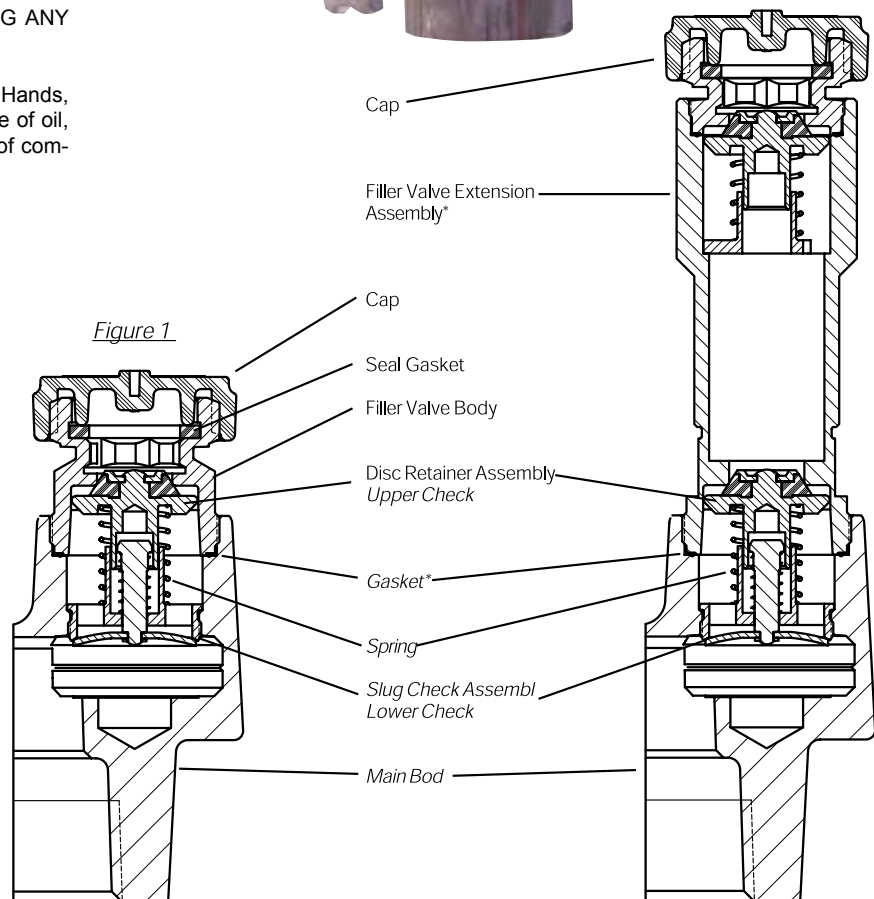
B. Reassembly - See Figure 2

NOTE: If tank is under LP-Gas pressure, wear gloves to complete remaining reassembly procedures. Stand aside from top of valve.

1. Place new gasket in main body.
2. Center the filler valve extension assembly over the disc retainer assembly (Upper Check) and turn into threads. Torque to 1500-1800 in/lbs.
3. Pressurize tank if necessary and check all seal joints with a high quality leak detection solution.
4. Replace cap.



Figure 2



Do You Care About What's In Your Propane Regulator?



WE DO.

And we know how important it is to select the highest quality components from suppliers you know and trust. Suppliers right here in America, just like us.

When you select an American made RegO Regulator, you are supporting sixteen other American manufacturers who supply our components. Suppliers who are not always the cheapest but are always the best.

Reliable products from trusted suppliers you have known for years—that is how we are able to keep supplying you the best-built propane regulators. Still made in America with a 25-Year Service Life and 10-Year Warranty.

Still Your First Choice... Still Made in America.



REGO[®] PRODUCTS



UNITED STATES

Alabama

Dealers LP Equipment Co.
Dothan, AL
Tel: (334) 793-8293 or (800) 433-8925
Fax: (334) 671-3805
www.dealerslp.com

Arkansas

Gas Equipment Co., Inc.
Little Rock, AR
Tel: (501) 376-7141 or (800) 643-8222
Fax: (501) 376-0917
www.gasequipment.com

California

Teeco Products, Inc.
Irvine, CA
Tel: (949) 261-6295 or (800) 854-3463
Fax: (949) 474-8663 or (888) 854-3463
www.teecoproducts.com
Email: info@teecoproducts.com

Teeco Products, Inc.

Sacramento, CA
Tel: (916) 688-3535 or (800) 225-6621
Fax: (916) 689-1219 or (888) 225-6621
www.teecoproducts.com
Email: info@teecoproducts.com

Colorado

Gas Equipment Co. of Denver
Wheat Ridge, CO
Tel: (303) 422-3403 or (800) 525-2054
Fax: (303) 422-7842

Connecticut

Victor/Divison of F.W. Webb Co.
Hartford, CT
Tel: (860) 289-4223 or
(800) 228-0508 (Inside CT)
(800) 243-9360 (Outside CT)
Fax: (800) 274-2004 or (860) 289-2457
Email: customerservice@victormfg.com
www.fwwebb.com
www.victormfg.com

Florida

Gas Equipment Co., Inc.
Orlando, FL
Tel: (407) 843-6536 or (800) 821-0631
Fax: (407) 648-1546
www.gasequipment.com

Peter Skop Industries

Ocala, FL
Tel: (352) 873-9641 or (800) 241-9880
Fax: (352) 873-9683
Email: propane@psi-propane.com

Tarantin Tank & Equipment Company

Hastings, FL 32145
Tel: (866) 837-1810
Fax: (904) 692-1068
www.tarantin.com

Georgia

Gas Equipment Co., Inc.
Lawrenceville, GA
Tel: (770) 995-1131 or (800) 241-4155
Fax: (770) 995-1216
www.gasequipment.com

Peter Skop Industries

Norcross, GA
Tel: (770) 449-4141 or (800) 241-9880
Fax: (800) 685-1052
Email: propane@psi-propane.com

Indiana

Gas Equipment Co., Inc.
Indianapolis, IN
Tel: (317) 541-1971 or (800) 241-1971
Fax: (317) 541-8352
www.gasequipment.com

Iowa

Dealers LP Equipment Co.
Davenport, IA
Tel: (563) 386-3874 or (800) 544-2191
Fax: (563) 386-3924
www.dealerslp.com

Kansas

Fairbank Equipment, Inc.
Wichita, KS
Tel: (316) 943-2247 or (800) 666-5764
Fax: (316) 943-6510
Email: fairbank@wichitausea.com
www.fairbankequipment.com

Kentucky

Dealers LP Equipment Co.
Louisville, KY
Tel: (502) 957-5630 or (800) 467-7541
Fax: (502) 957-5631
www.dealerslp.com

Michigan

IPS Equipment, Inc.
Byron, MI
Tel: (810) 266-4687 or (800) 621-4137
Fax: (810) 266-5554
www.ipsequipment.com
Email: ipsequip@shianet.org

Minnesota

LP Gas Equipment, Inc.
St. Paul, MN
Tel: (651) 646-1177
(800) 652-9072 (Inside MN)
(800) 328-9222 (Outside MN)
Fax: (651) 646-1676
Email: lpgas@visi.com
www.lp-gasequipment.com

LPG & NH3 Supply, Inc.

Buffalo, MN
Tel: (763) 746-0540 or (800) 328-0314.
Fax: (763) 746-0548
www.lpgandnh3.com

Mississippi

Dealers LP Equipment Co.
Jackson, MS
Tel: (601) 353-2267 or (800) 844-0267
Fax: (601) 353-2268
Email: websales@dealerslp.com
www.dealerslp.com

Missouri

Gas Equipment Co., Inc.
Kansas City, MO
Tel: (816) 746-9555 or (800) 821-5062
Fax: (816) 746-8522
www.gasequipment.com

Gas Equipment Co., Inc.

Earth City, MO
Tel: (314) 298-8219 or (800) 423-4685
Fax: (314) 298-7753
www.gasequipment.com

Nebraska

Fairbank Equipment, Inc.
Grand Island, NE
Tel: (308) 381-4266 or (800) 441-7550
Fax: (888) 505-2975 or (308) 384-9470
www.fairbankequipment.com

New Hampshire

F.W. Webb Company
Amherst, NH
Tel: (603) 882-1945
Fax: (603) 883-4256
Email: cps@fwwebb.com
www.fwwebb.com

Tarantin Tank and Equipment

Brentwood, NH
Tel: (603) 679-4617 or (800) 895-8265
Fax: (603) 679-4605
Email: tte@tarantin.com
www.tarantin.com

New Jersey

Tarantin Tank and Equipment
Freehold, NJ
Tel: (732) 780-9340 or (800) 922-0724
Fax: (732) 780-5173
Email: tte@tarantin.com
www.tarantin.com

New York

F.W. Webb Company
Clyde, NY
Tel: (315) 923-7819 or (800) 828-8824
Fax: (315) 923-3794
www.fwwebb.com

North Carolina

Dealers LP Equipment Co.
Hickory, NC
Tel: (828) 324-4469 or (800) 330-1738
Fax: (828) 322-4466
www.dealerslp.com

Gas Equipment Co., Inc.

Fayetteville, NC
Tel: (910) 323-3747 or (800) 447-1625
Fax: (910) 323-3879
www.gasequipment.com

Oklahoma

Fairbank Equipment, Inc.
Chandler, OK
877-258-2802
405-258-2402
Fax: 1-405-258-6704
www.fairbankequipment.com

Pennsylvania

Tarantin Tank and Equipment
Camp Hill, PA
Tel: (717) 972-8750 or (888) 972-6323
Fax: (717) 972-8737
Email: tte@tarantin.com
www.tarantin.com

South Dakota

Teeco Products, Inc.
Rapid City, SD
Tel: (605) 342-2802 or (800) 843-8660
Fax: (605) 342-4942 or (888) 843-8660
www.teecoproducts.com
Email: info@teecoproducts.com

Fairbank Equipment, Inc.

Yankton, SD
Tel: (605) 665-3041 or (800) 843-7913
Fax: (605) 665-8737 or (888) 843-7913
www.fairbankequipment.com

Tennessee

Dealers LP Equipment
Memphis, TN
Tel: (901) 386-8780 or (800) 238-3284
Fax: (901) 386-8786
www.dealerslp.com

Dealers LP Equipment

Knoxville, TN
Tel: (866) 384-4190
Fax: (865) 212-3645
www.dealerslp.com

Texas

Gas Equipment Co., Inc.
Dallas, TX
Tel: (972) 241-2333 or (800) 821-1829
Fax: (972) 620-1403
www.gasequipment.com

Gas Equipment Co., Inc.

Houston, TX
Tel: (713) 896-1077 or (800) 334-7816
Fax: (713) 896-9299
www.gasequipment.com

Virginia

Gas Equipment Co., Inc.
Richmond, VA
Tel: (804) 226-7827 or (800) 368-4013
Fax: (804) 226-8278
www.gasequipmentsupplyco.com

Tarantin Tank & Equipment

Richmond, VA
Tel: (804) 279-0203
Fax: (804) 279-0206
http://www.tarantin.com

Washington

Teeco Products, Inc.
Auburn, WA
Tel: (253) 735-0222 or (800) 426-9456
Fax: (253) 735-1008 or (888) 426-9456
www.teecoproducts.com
Email: info@teecoproducts.com



CANADA

Alberta

Diversco Supply, Inc.
Calgary, Alberta
Tel: (403) 236-4494 or (800) 661-3139
Fax: (403) 236-5561
www.diverscosupply.com

MaX-Quip Inc.

Calgary, AB
Tel: 403-258-3685 or 866-629-7847
Fax: 403-279-3099

MaX-Quip Inc.

Edmonton, AB
Tel: 780-442-3320 or 800-661-7770
Fax: 780-451-5810

British Columbia

Max-Quip, Inc.
Kelowna, BC
Tel: (604) 308-9430 or (866) 629-7847
Fax: (604) 854-5450

Manitoba

Max-Quip, Inc.
Winnipeg, MB
Tel: (204) 781-6574 or (866) 629-7847

Diversco Supply Inc.

Winnipeg, Manitoba
Phone: 204-981-0881
Fax: 204-284-0431

New Brunswick

Diversco Supply Inc.
Moncton, New Brunswick
Phone: 506-382-7376
Fax: 506-382-7872

Ontario

Diversco Supply, Inc.
Cambridge, Ontario
Tel: (519) 740-1210 or (800) 661-9955
Fax: (519) 740-7303
www.diverscosupply.com

Quebec

Diversco Supply, Inc.
Pointe Claire, Quebec
Tel: (514) 693-0933 or (800) 465-3557
Fax: (514) 693-0899
www.diverscosupply.com

Saskatchewan

Max-Quip Inc.
Saskatoon, SK
Tel: (306)-242-8900
Fax: (306)-242-7878